

A silver metal spiral binding is visible along the left edge of the page, with the wire looping through a series of holes in the paper.

# **Enrollment Summary and Five-Year Trend Analysis of Performance Indicators**

Presentation to the Arizona Western  
College Governing Board

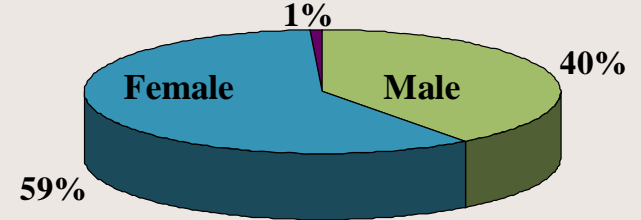
11/13/2006

# Enrollment Summary 2004-2005

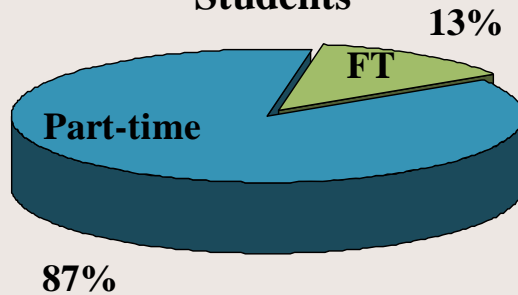
Total unduplicated 11,445

Fulltime equivalent 4,339

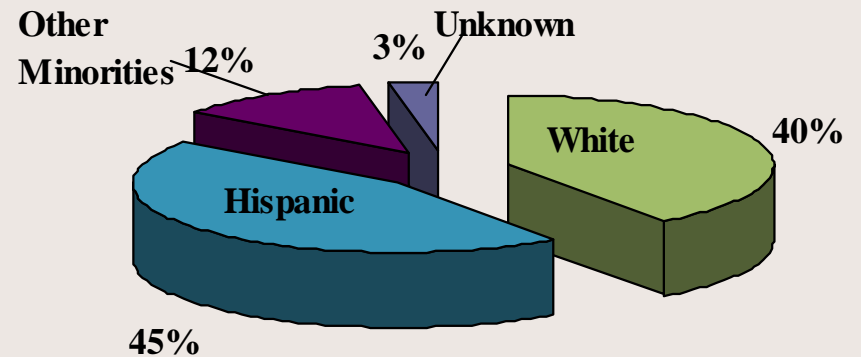
### Gender Distribution



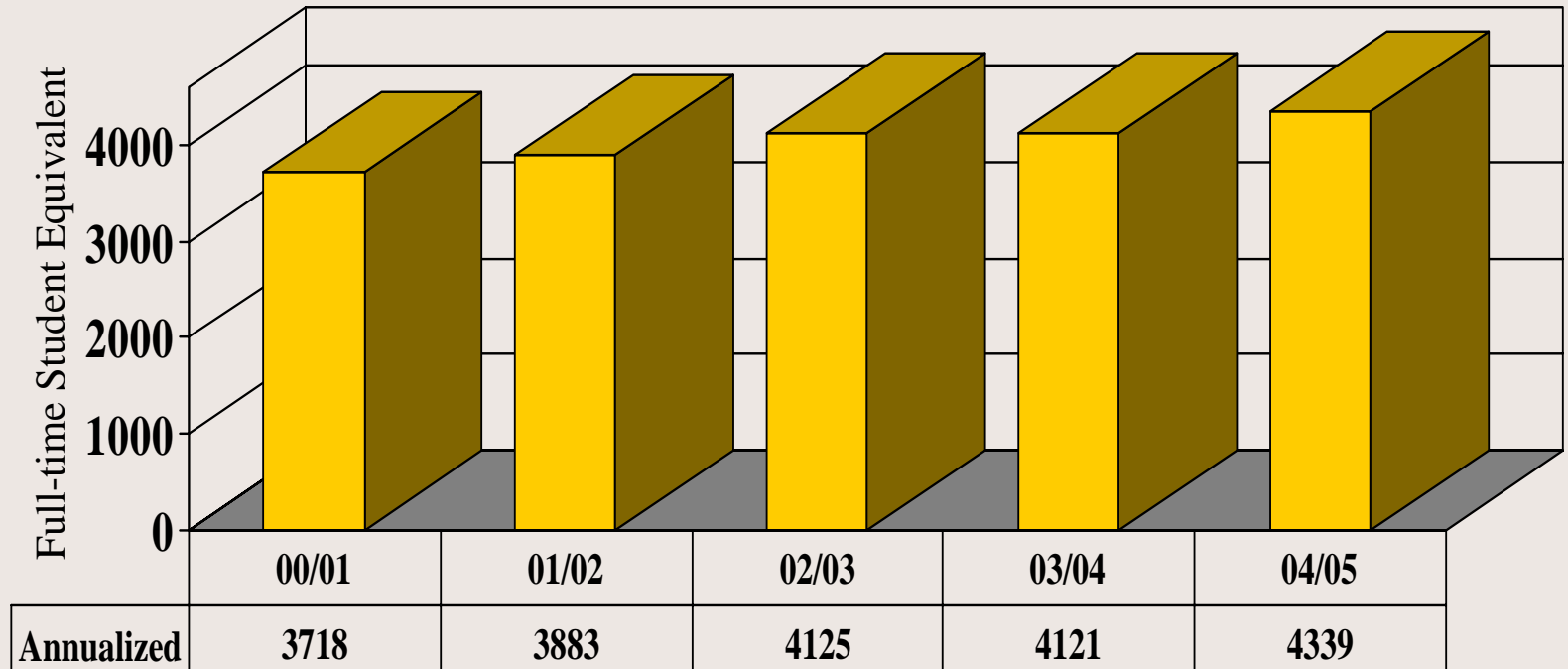
### Enrollment Status of Students



### Ethnic Distribution

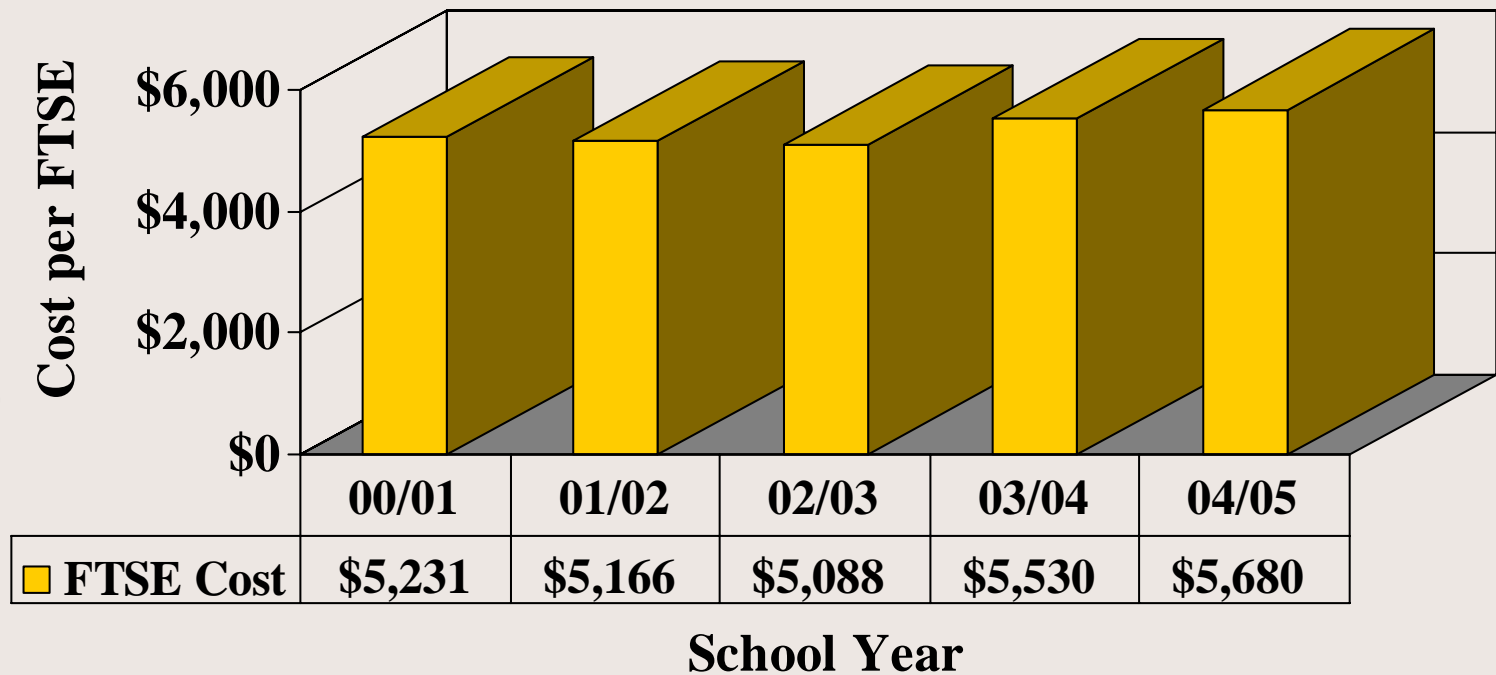


# Five-Year FTSE Trend



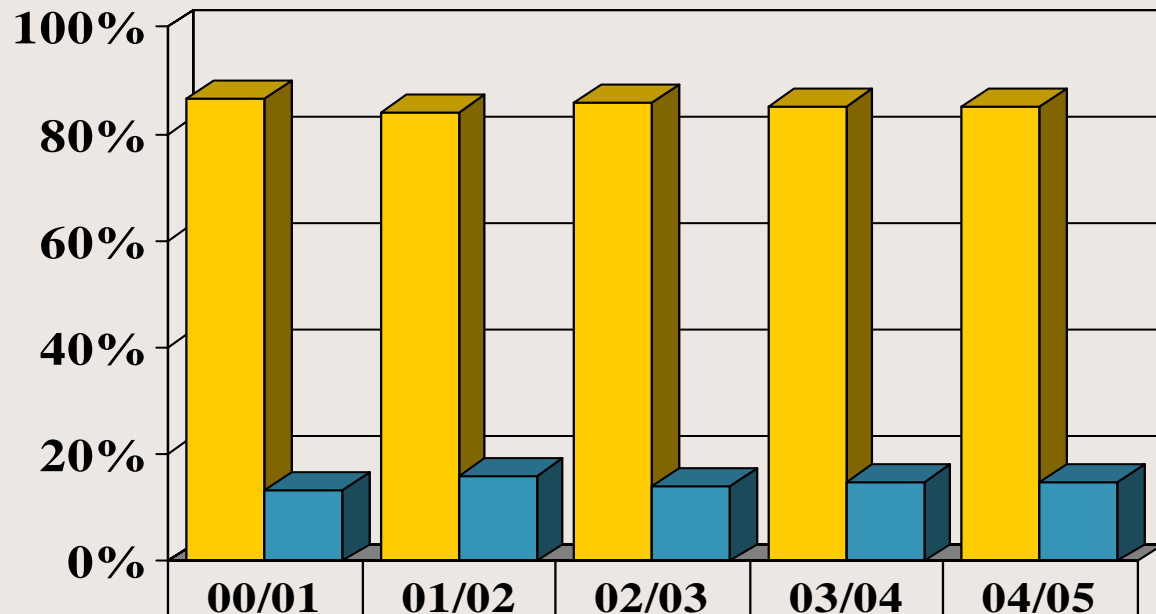
Source: AWC Business and Administrative Services Office

# Five-Year Cost Per FTSE Trend



Source: AWC Business and Administrative Services Office

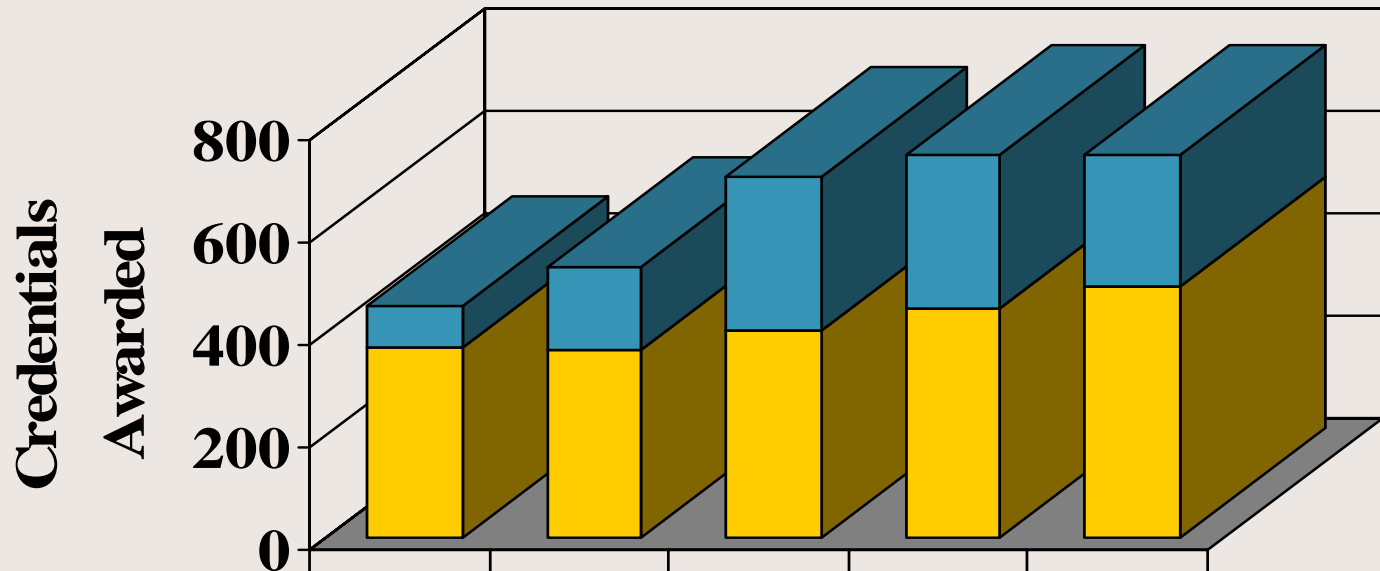
# Five-Year Trend of Academic Success Measures



<b>■ A, B, C, CR or I</b>	<b>87%</b>	<b>84%</b>	<b>86%</b>	<b>85%</b>	<b>85%</b>
<b>■ D, F, or NCR</b>	<b>13%</b>	<b>16%</b>	<b>14%</b>	<b>15%</b>	<b>15%</b>

Source: Office of Institutional Effectiveness, Research and Grants

# Five-Year Trend of Credentials Awarded

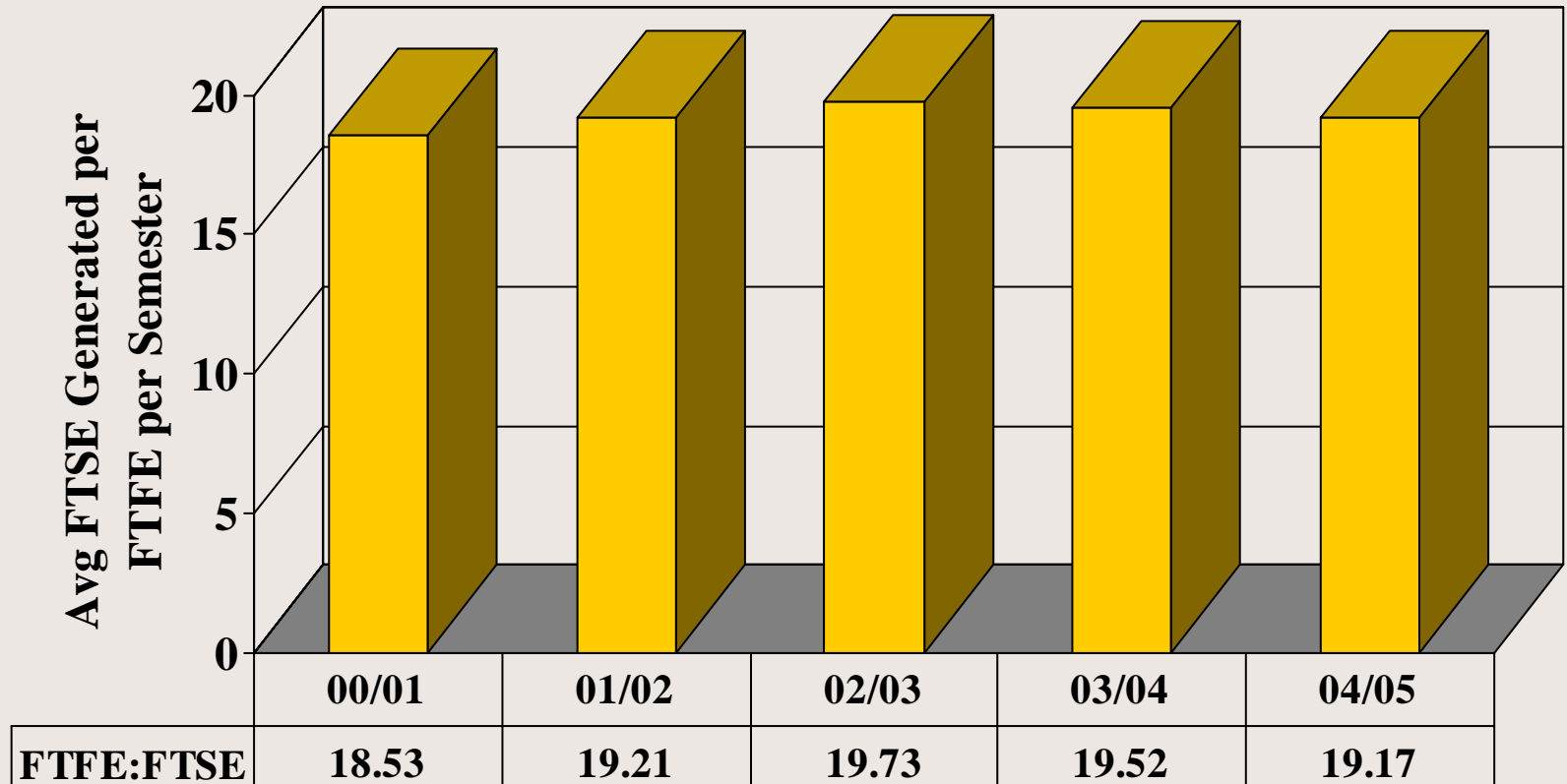


	00/01	01/02	02/03	03/04	04/05
<b>■ Certificates*</b>	<b>79</b>	<b>160</b>	<b>303</b>	<b>300</b>	<b>255</b>
<b>■ Degrees</b>	<b>375</b>	<b>371</b>	<b>405</b>	<b>452</b>	<b>495</b>

\*Data Incomplete for Some Years

Source: Office of Institutional Effectiveness, Research and Grants

# Five-Year Trend of Full-time Faculty Equivalent to FTSE\*



**Source: Office of Human Resources and Dean of Instruction**

\* Based on Fall & Spring Semester Information Only

11/13/2006